

ST. JOHNSBURY

---

VERMONT

[illegible]

DATE: 05/17/2022

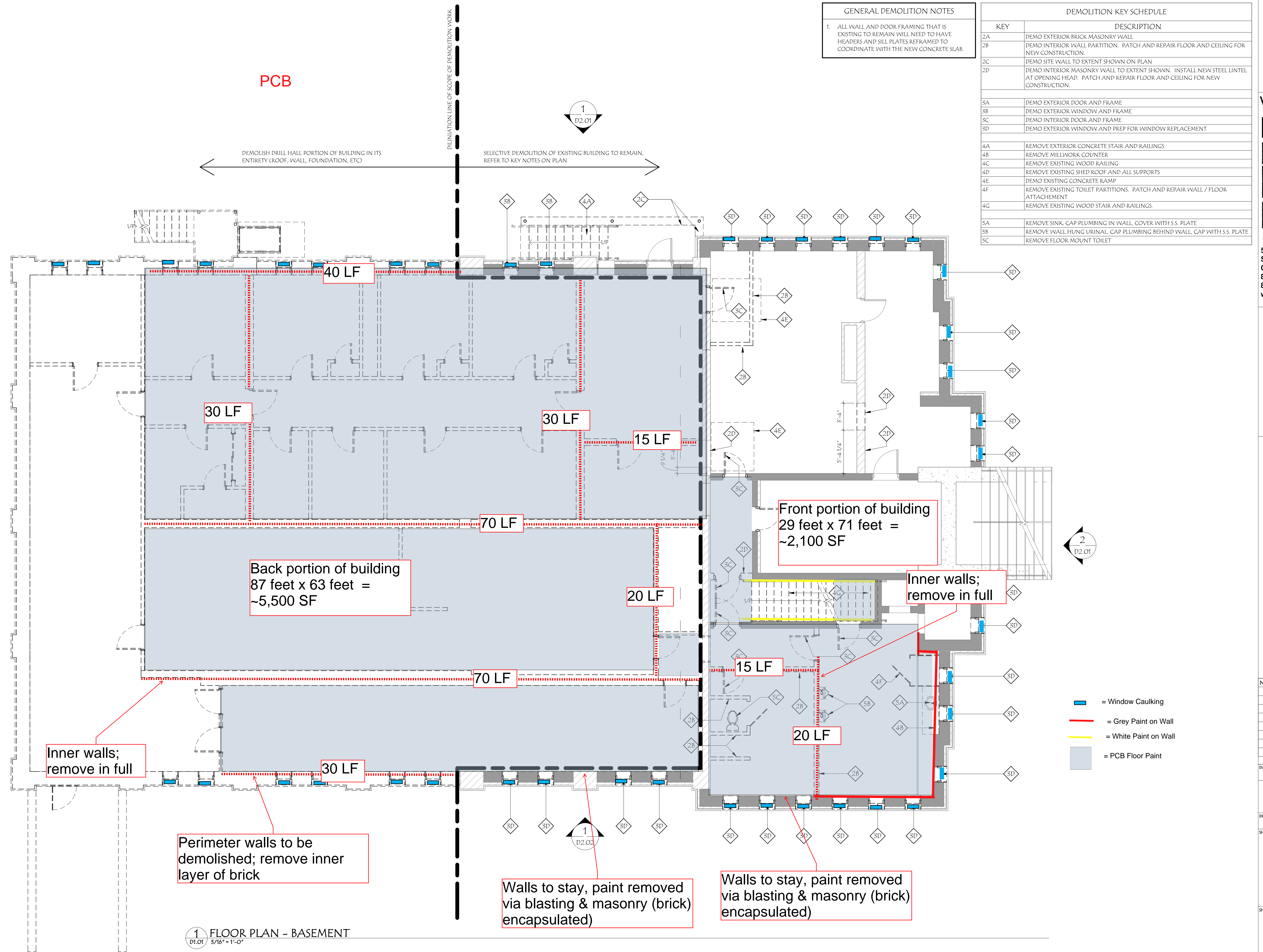
SCALE:	As indicated
PROJECT NO:	

2021030	
DRAWN BY: RJH	CHECKED BY: DPR

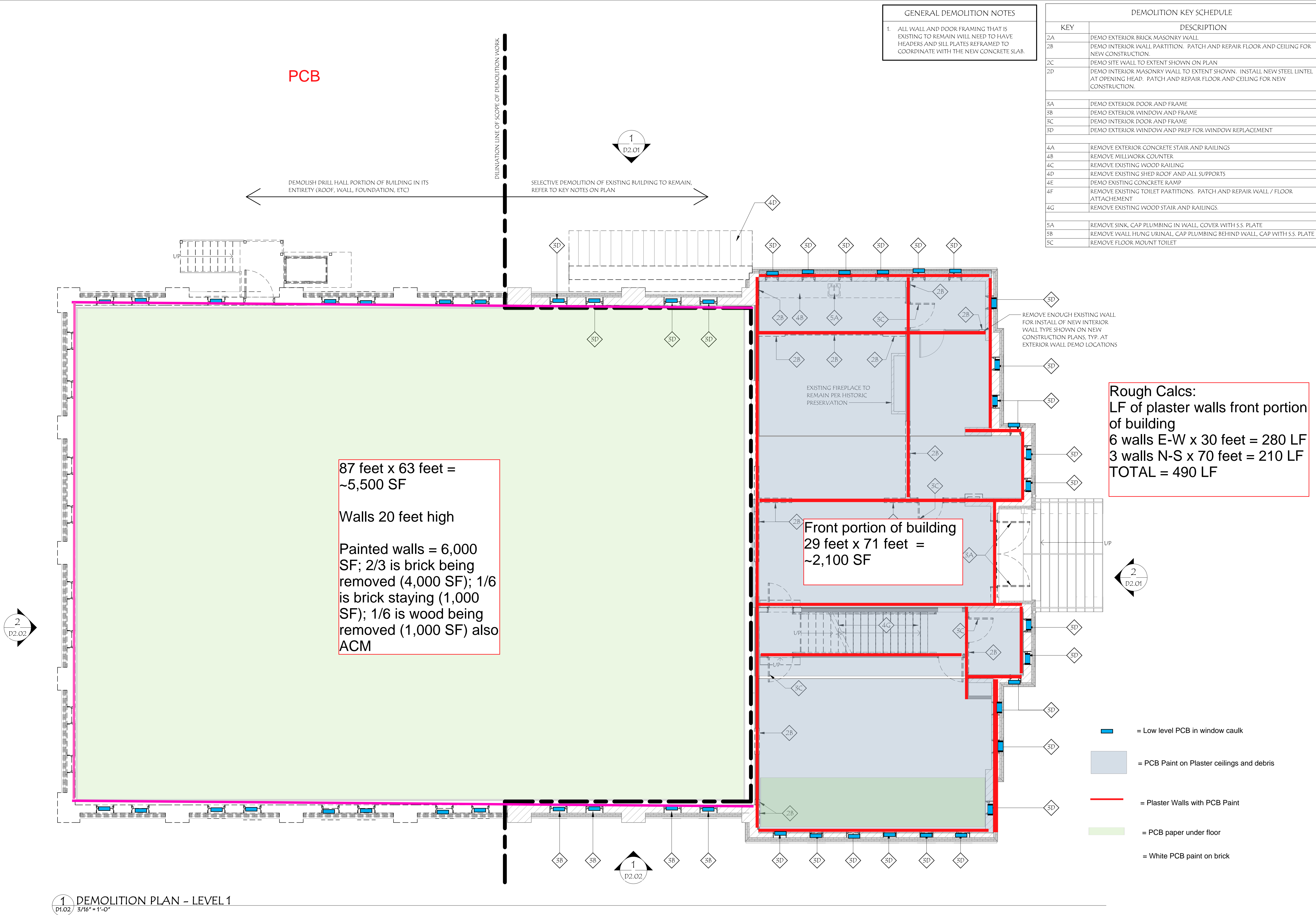
DEMOLITION  
PLAN -  
BASEMENT

SHEET NUMBER:

D1.01

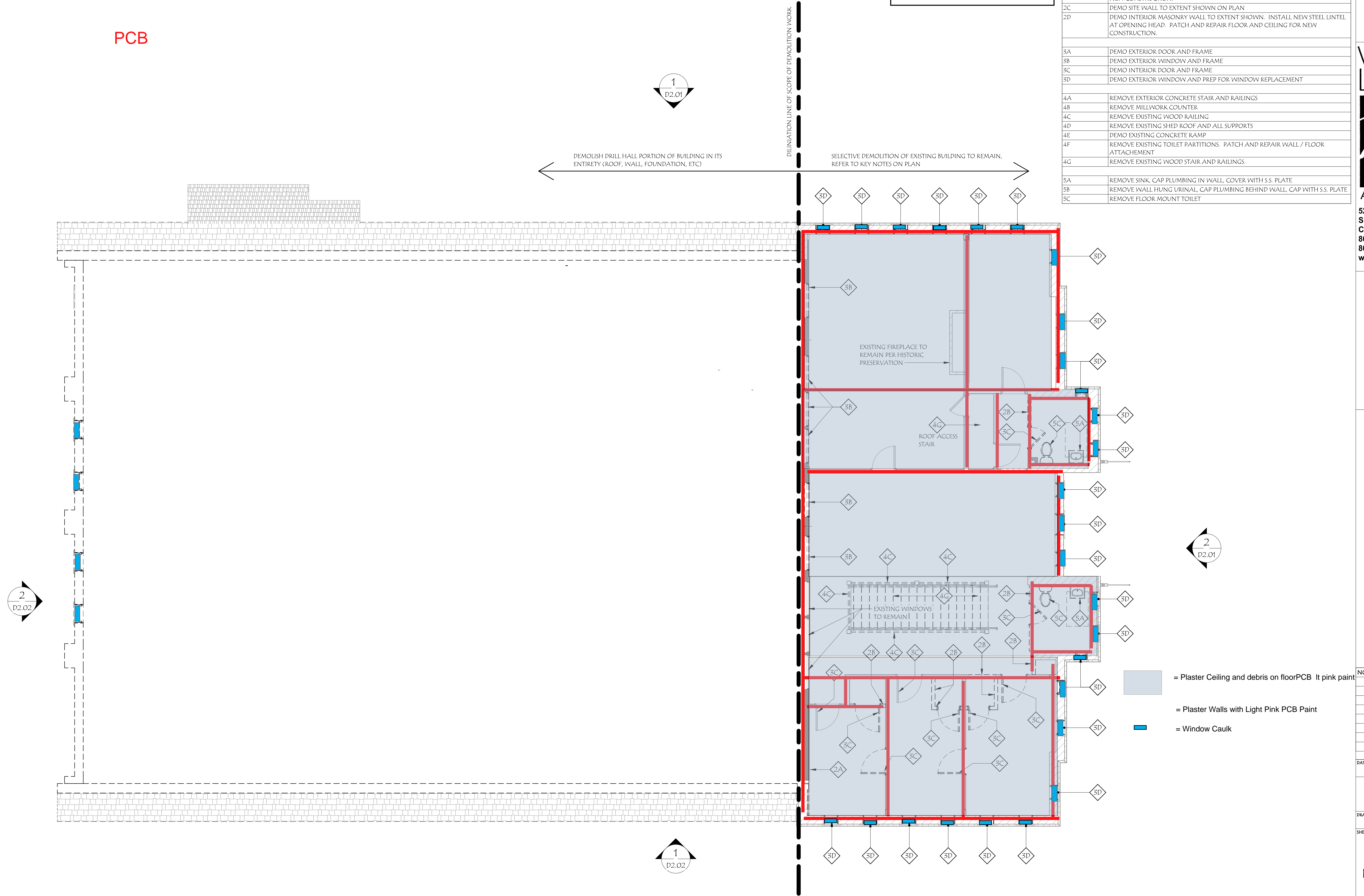


PRINTED: 5/15/2022 2:05:00 PM FILENAME: C:\Users\happa\Documents\20210508\_81\_Public Safety Facility 822\_ARCH1\_822.dwg





PCB



1 FLOOR PLAN - SECOND FLOOR  
D1.03 3/16" = 1'-0"

GENERAL DEMOLITION NOTES	
1.	ALL WALL AND DOOR FRAMING THAT IS EXISTING TO REMAIN WILL NEED TO HAVE HEADERS AND SILL PLATES REFRAMED TO COORDINATE WITH THE NEW CONCRETE SLAB.

DEMOLITION KEY SCHEDULE	
KEY	DESCRIPTION
2A	DEMO EXTERIOR BRICK MASONRY WALL
2B	DEMO INTERIOR WALL PARTITION. PATCH AND REPAIR FLOOR AND CEILING FOR NEW CONSTRUCTION.
2C	DEMO SITE WALL TO EXTENT SHOWN ON PLAN
2D	DEMO INTERIOR MASONRY WALL TO EXTENT SHOWN. INSTALL NEW STEEL LINTEL AT OPENING HEAD. PATCH AND REPAIR FLOOR AND CEILING FOR NEW CONSTRUCTION.
5A	DEMO EXTERIOR DOOR AND FRAME
5B	DEMO EXTERIOR WINDOW AND FRAME
5C	DEMO INTERIOR DOOR AND FRAME
5D	DEMO EXTERIOR WINDOW AND PREP FOR WINDOW REPLACEMENT
4A	REMOVE EXTERIOR CONCRETE STAIR AND RAILINGS
4B	REMOVE MILLWORK COUNTER
4C	REMOVE EXISTING WOOD RAILING
4D	REMOVE EXISTING SHED ROOF AND ALL SUPPORTS
4E	DEMO EXISTING CONCRETE RAMP
4F	REMOVE EXISTING TOILET PARTITIONS. PATCH AND REPAIR WALL / FLOOR ATTACHMENT
4G	REMOVE EXISTING WOOD STAIR AND RAILINGS.
5A	REMOVE SINK, CAP PLUMBING IN WALL, COVER WITH S.S. PLATE
5B	REMOVE WALL HUNG URINAL, CAP PLUMBING BEHIND WALL, CAP WITH S.S. PLATE
5C	REMOVE FLOOR MOUNT TOILET

Wiemann  
Lamphere



**525 Hercules Drive  
Suite Two  
Colchester, VT 05446  
802.655.5020  
802.622.6567  
wiemannlamphere.com**

PUBLIC SAFETY FACILITY

ST. JOHNSBURYVERMONT

[illegible]

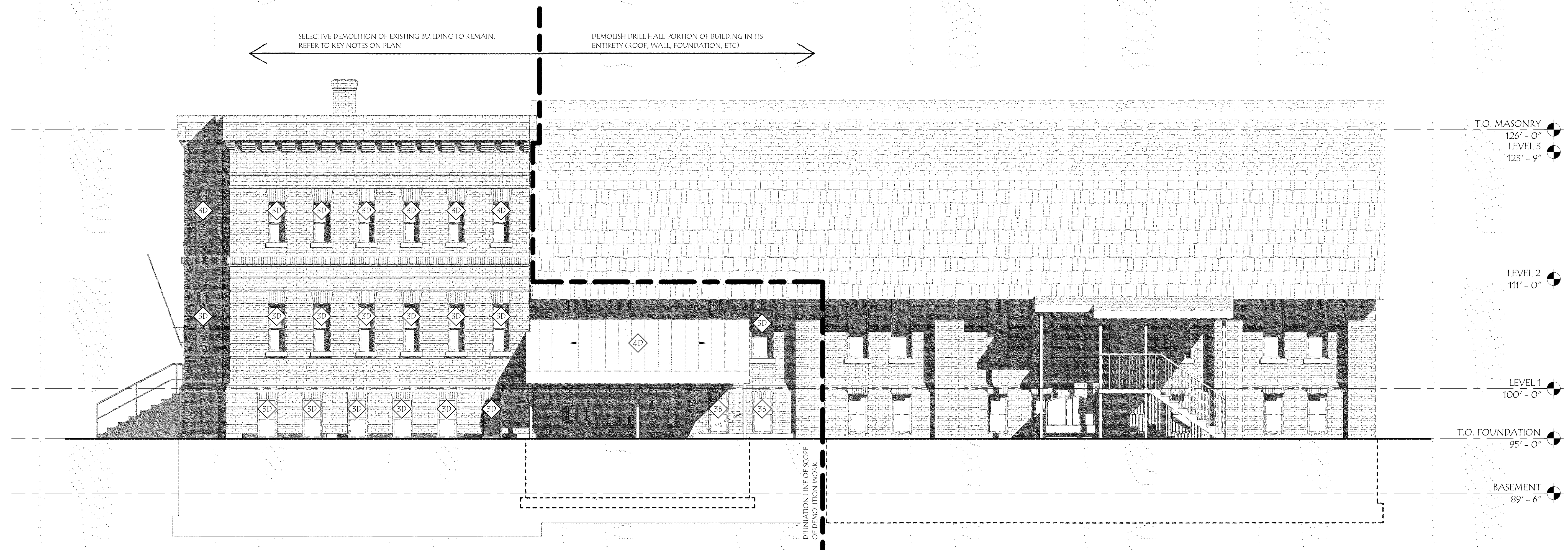
DATE:		05/13/2022	
		SCALE:	As indicated
		PROJECT NO:	2021050
DRAWN BY:		CHECKED BY:	
RJH		DPR	

DEMOLITION  
PLAN - LEVEL 2

SHEET NUMBER:

## D1.03



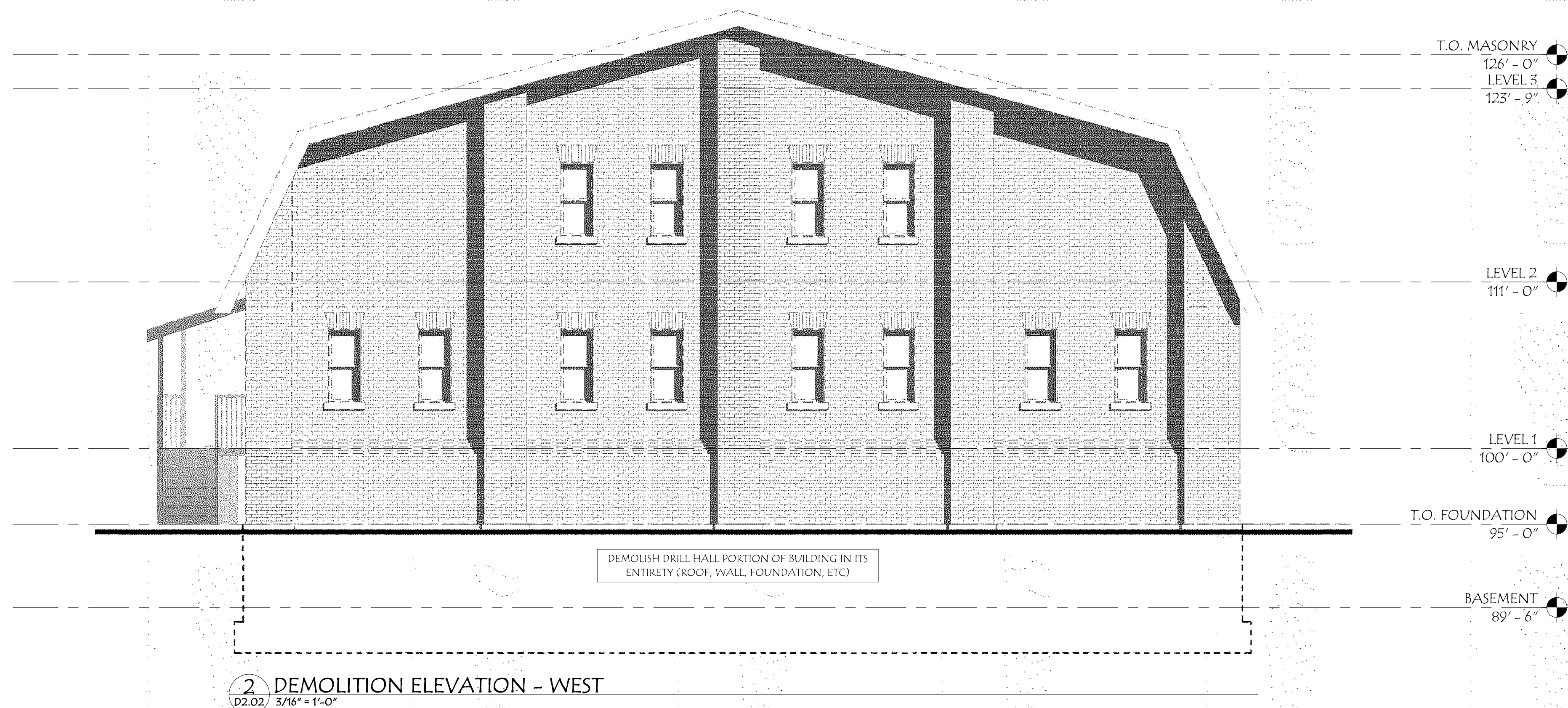
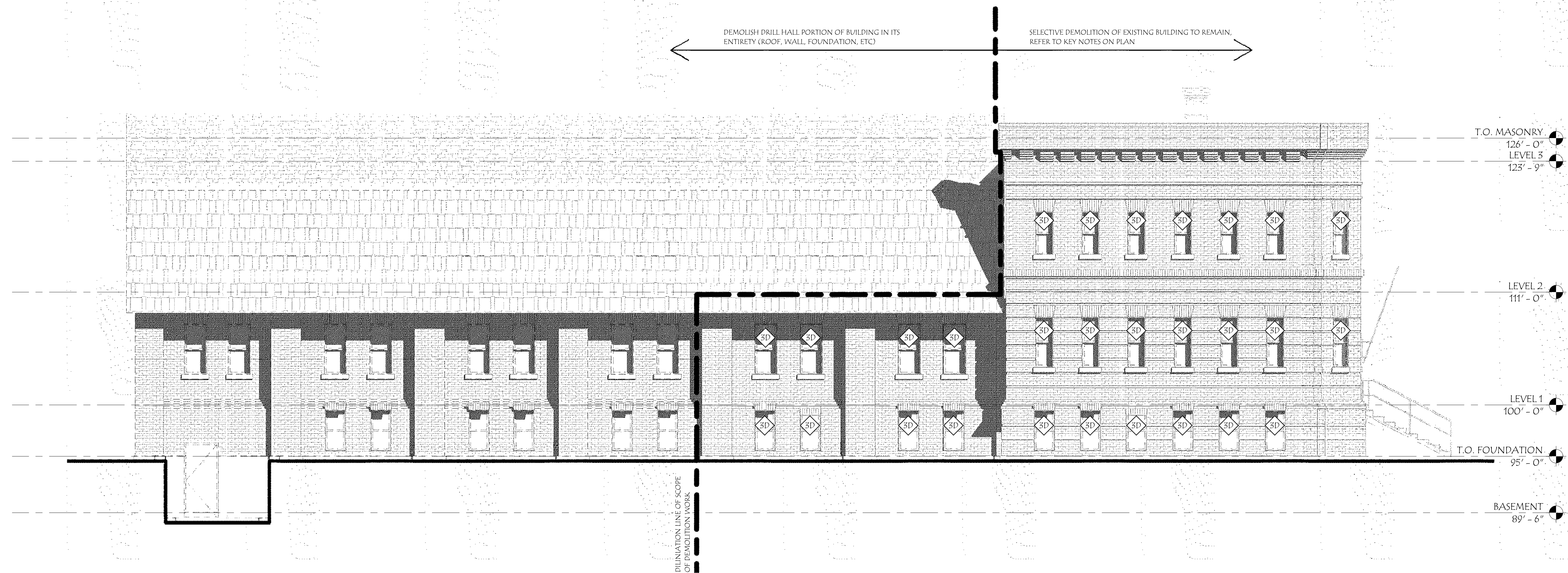


DEMOLITION KEY SCHEDULE	
KEY	DESCRIPTION
2A	DEMO EXTERIOR BRICK MASONRY WALL
2B	DEMO INTERIOR WALL PARTITION. PATCH AND REPAIR FLOOR AND CEILING FOR NEW CONSTRUCTION.
2C	DEMO SITE WALL TO EXTENT SHOWN ON PLAN
2D	DEMO INTERIOR MASONRY WALL TO EXTENT SHOWN. INSTALL NEW STEEL LINTEL AT OPENING HEAD. PATCH AND REPAIR FLOOR AND CEILING FOR NEW CONSTRUCTION.
3A	DEMO EXTERIOR DOOR AND FRAME
3B	DEMO EXTERIOR WINDOW AND FRAME
3C	DEMO INTERIOR DOOR AND FRAME
3D	DEMO EXTERIOR WINDOW AND PREP FOR WINDOW REPLACEMENT
4A	REMOVE EXTERIOR CONCRETE STAIR AND RAILINGS
4B	REMOVE MILLWORK COUNTER
4C	REMOVE EXISTING WOOD RAILING
4D	REMOVE EXISTING SHED ROOF AND ALL SUPPORTS
4E	DEMO EXISTING CONCRETE RAMP
4F	REMOVE EXISTING TOILET PARTITIONS. PATCH AND REPAIR WALL / FLOOR ATTACHMENT
4G	REMOVE EXISTING WOOD STAIR AND RAILINGS
5A	REMOVE SINK. CAP PLUMBING IN WALL. COVER WITH S.S. PLATE
5B	REMOVE WALL HUNG URINAL. CAP PLUMBING BEHIND WALL. CAP WITH S.S. PLATE
5C	REMOVE FLOOR MOUNT TOILET

[illegible]

DATE: 05/13/2022	
SCALE:	3/16" = 1'-0"
	PROJECT NO: 2021050
DRAWN BY: RJH	CHECKED BY: DPR
SHEET TITLE: Mechanical	





DEMOLITION KEY SCHEDULE	
KEY	DESCRIPTION
2A	DEMO EXTERIOR BRICK MASONRY WALL
2B	DEMO INTERIOR WALL PARTITION. PATCH AND REPAIR FLOOR AND CEILING FOR NEW CONSTRUCTION.
2C	DEMO SITE WALL TO EXTENT SHOWN ON PLAN
2D	DEMO INTERIOR MASONRY WALL TO EXTENT SHOWN. INSTALL NEW STEEL LINTEL AT OPENING HEAD. PATCH AND REPAIR FLOOR AND CEILING FOR NEW CONSTRUCTION.
3A	DEMO EXTERIOR DOOR AND FRAME
3B	DEMO EXTERIOR WINDOW AND FRAME
3C	DEMO INTERIOR DOOR AND FRAME
3D	DEMO EXTERIOR WINDOW AND PREP FOR WINDOW REPLACEMENT
4A	REMOVE EXTERIOR CONCRETE STAIR AND RAILINGS
4B	REMOVE MILL WORK COUNTER
4C	REMOVE EXISTING WOOD RAILING
4D	REMOVE EXISTING SHED ROOF AND ALL SUPPORTS
4E	DEMO EXISTING CONCRETE RAMP
4F	REMOVE EXISTING TOILET PARTITIONS. PATCH AND REPAIR WALL / FLOOR ATTACHMENT
4G	REMOVE EXISTING WOOD STAIR AND RAILINGS.
5A	REMOVE SINK. CAP PLUMBING IN WALL. COVER WITH S.S. PLATE
5B	REMOVE WALL HUNG URINAL. CAP PLUMBING BEHIND WALL. CAP WITH S.S. PLATE
5C	REMOVE FLOOR MOUNT TOILET

[illegible]

DATE:	05/13/2022
SCALE:	3/16" = 1'-0"
PROJECT NO:	2021050
DRAWN BY:	CHECKED BY:
RJH	DPR
SHEET TITLE:	



PUBLIC SAFETY FACILITY

ST. JOHNSBURY

VERMONT

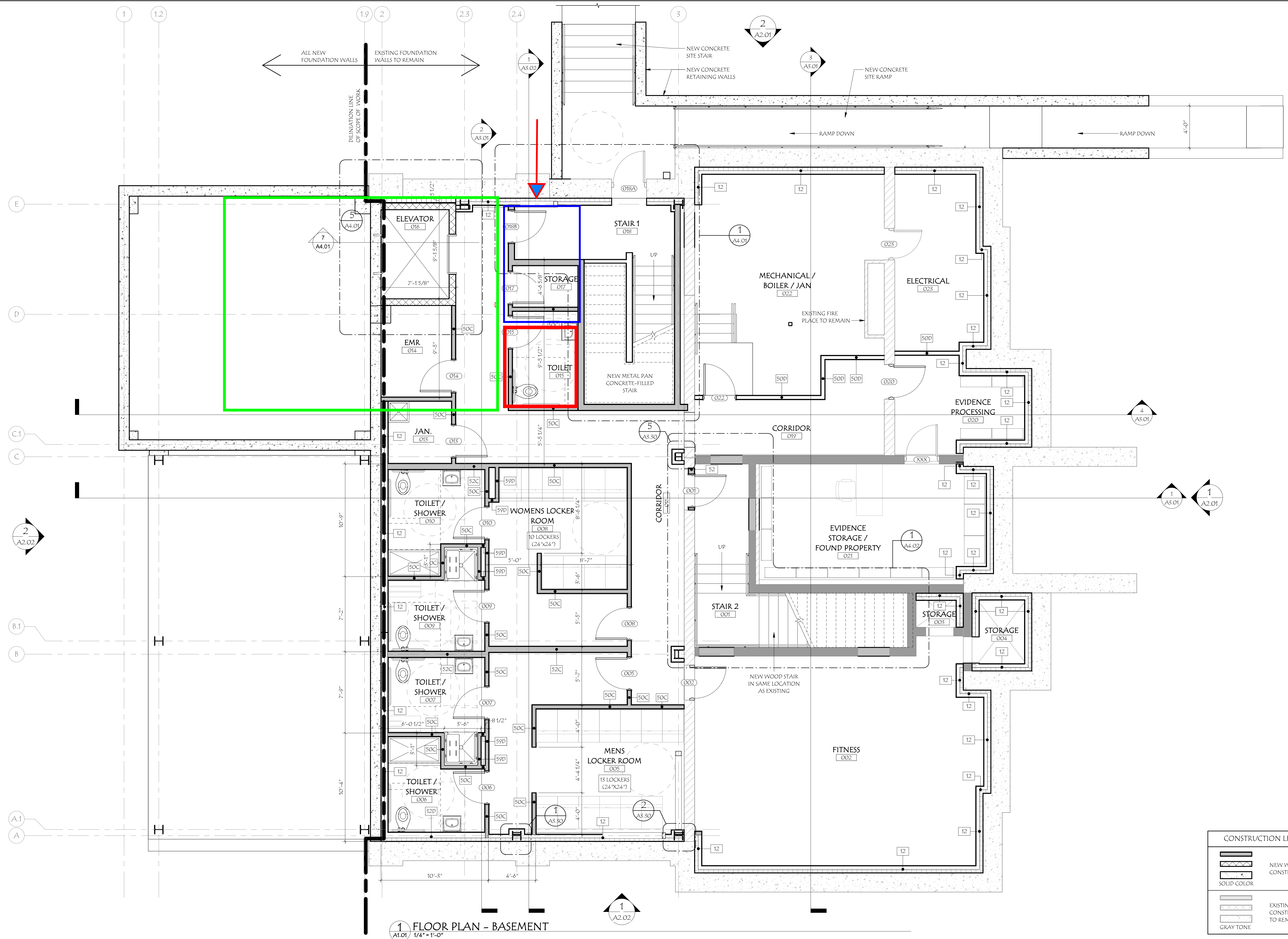
[illegible]

DATE:		05/13/2022	
		SCALE:	1/4" = 1'-0"
		PROJECT NO:	2021050
DRAWN BY:		CHECKED BY:	
RJH		DPR	
SHEET TITLE:			

FLOOR PLAN -  
BASEMENT

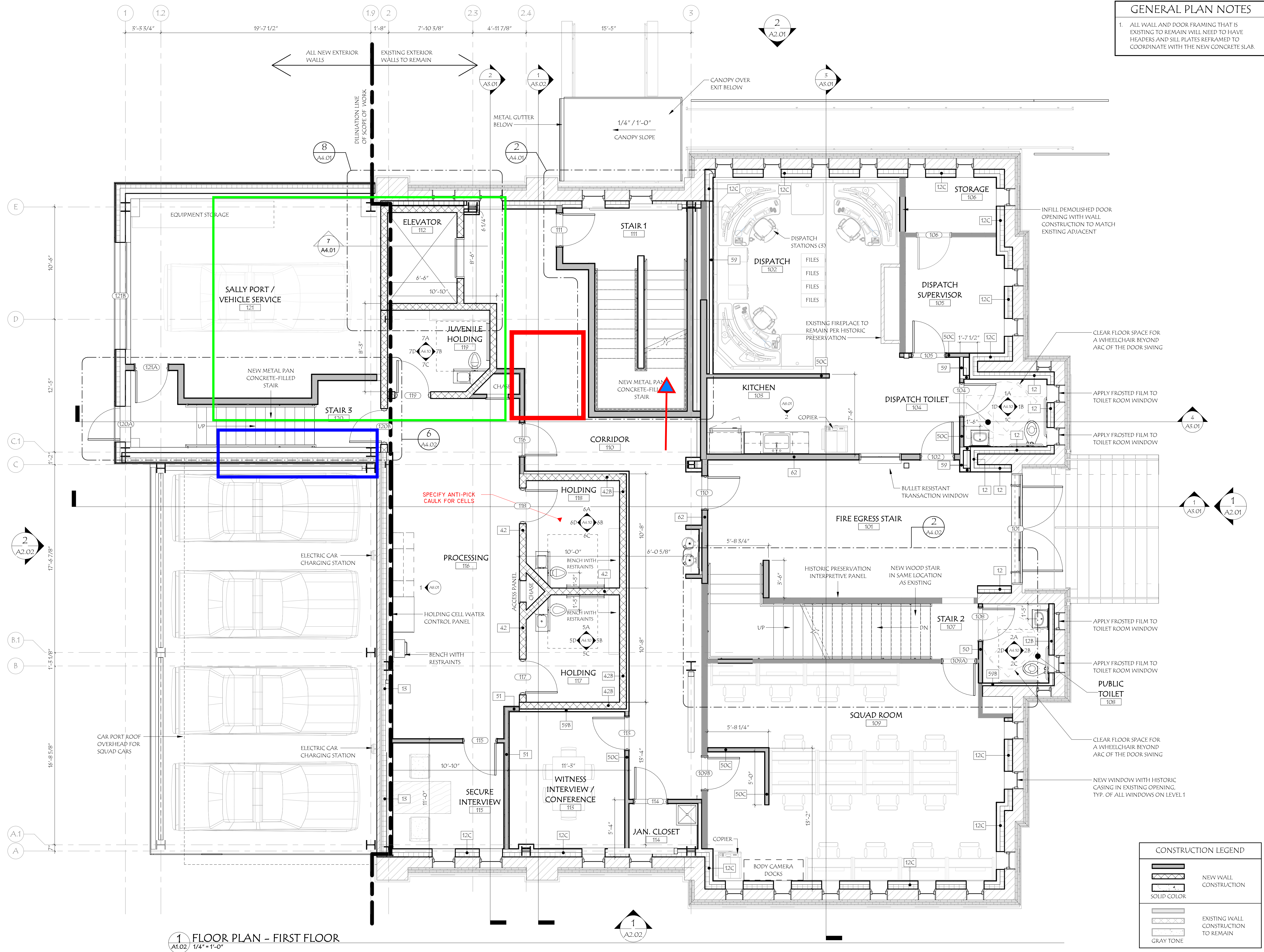
SHEET NUMBER:

A1.01

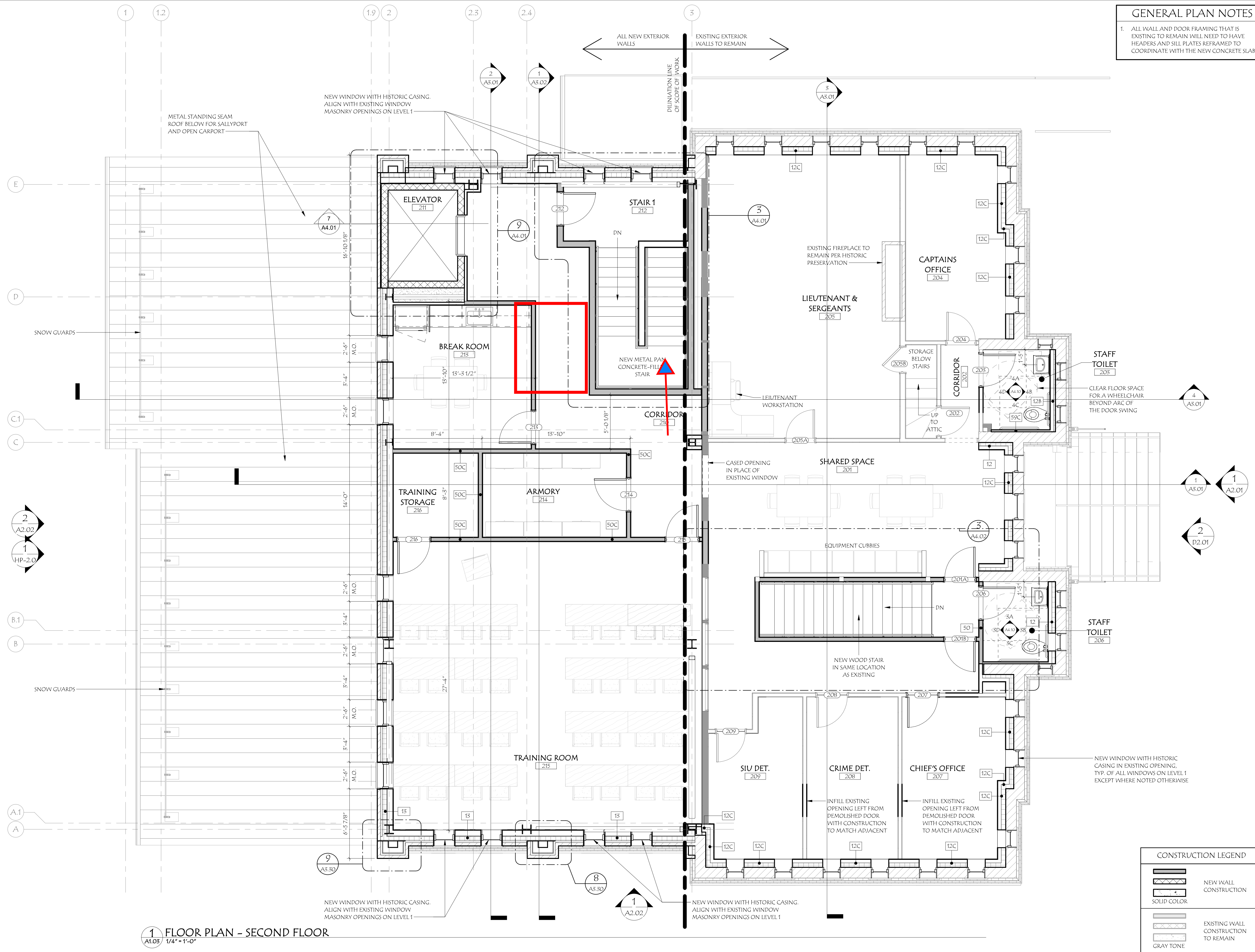




PRINTED: 5/15/2022 11:18:46 AM FILENAME: C:\Users\lhp\AppData\Local\Temp\St\_J\_Pub\_Safety\_Facility\_822\_ARCH\_1\lhp\lhpTR010.rvt







GENERAL PLAN NOTES	
1.	ALL WALL AND DOOR FRAMING THAT IS EXISTING TO REMAIN WILL NEED TO HAVE HEADERS AND SILL PLATES REFRAMED TO COORDINATE WITH THE NEW CONCRETE SLAB

Wiemann  
Lamphere  
  
ARCHITECTS

**525 Hercules Drive  
Suite Two  
Colchester, VT 05446  
802.655.5020  
802.622.6567  
wiemannlamphere.com**

PUBLIC SAFETY FACILITY

[illegible]

DATE:		05/13/2022	
		SCALE:	1/4" = 1'-0"
		PROJECT NO:	2021050
DRAWN BY:		CHECKED BY:	
RJH		DPR	
SHEET TITLE:			

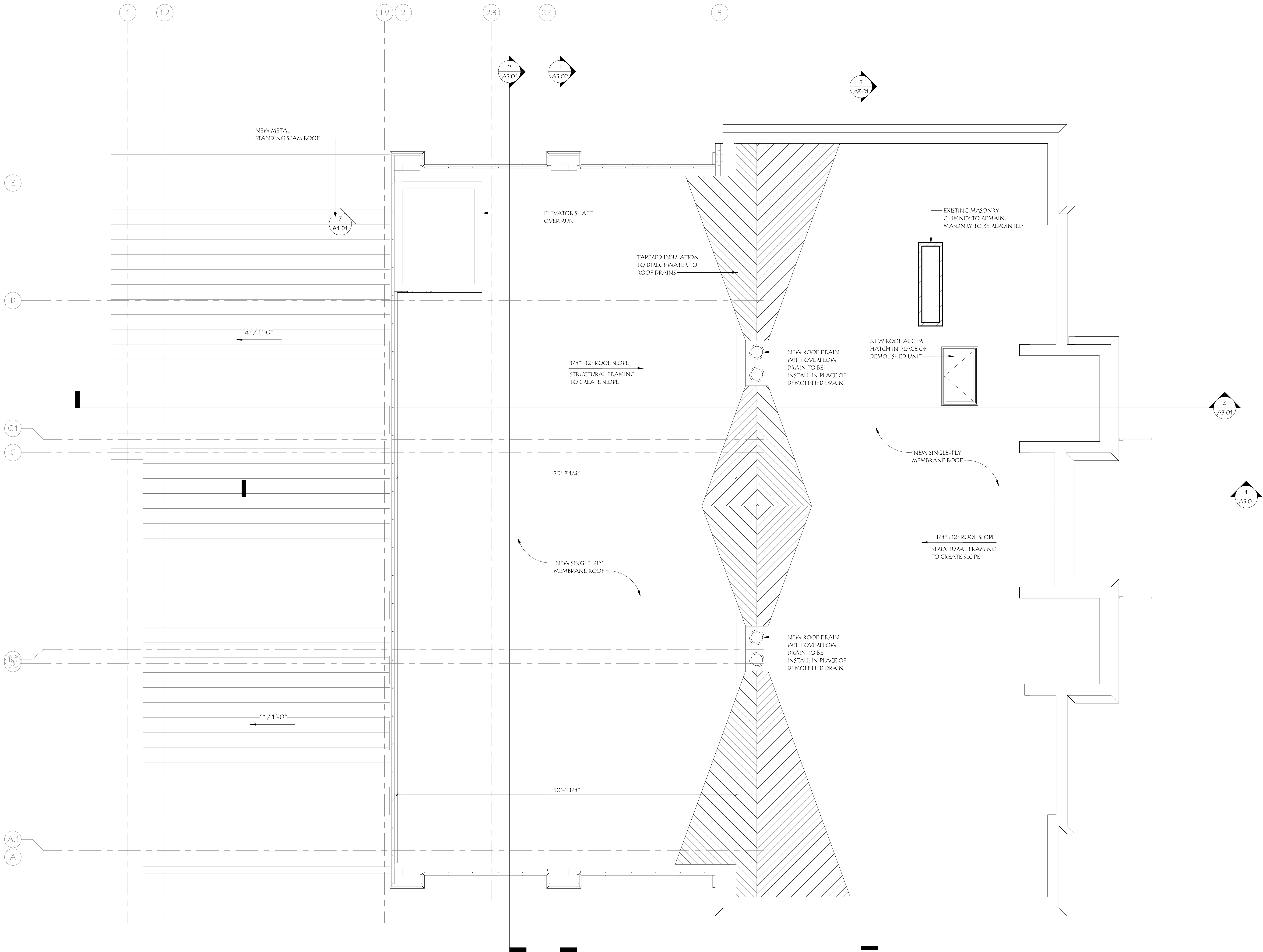
FLOOR PLAN -  
LEVEL 2

SHEET NUMBER

## A1.03



PRINTED: 5/15/2022 9:51:09 AM FILENAME: C:\Users\lhp\Documents\20210508\_SK\_Pub\_Safety\_Facility\_822\_ARCH\_PlanetRQ01.rvt



1 ROOF PLAN  
A1.05 1/4" = 1'-0"



525 Hercules Drive  
Suite Two  
Colchester, VT 05446  
802.655.5020  
802.622.6567  
wiemannlamphere.com

PUBLIC SAFETY FACILITY  
ST. JOHNSBURY  
VERMONT

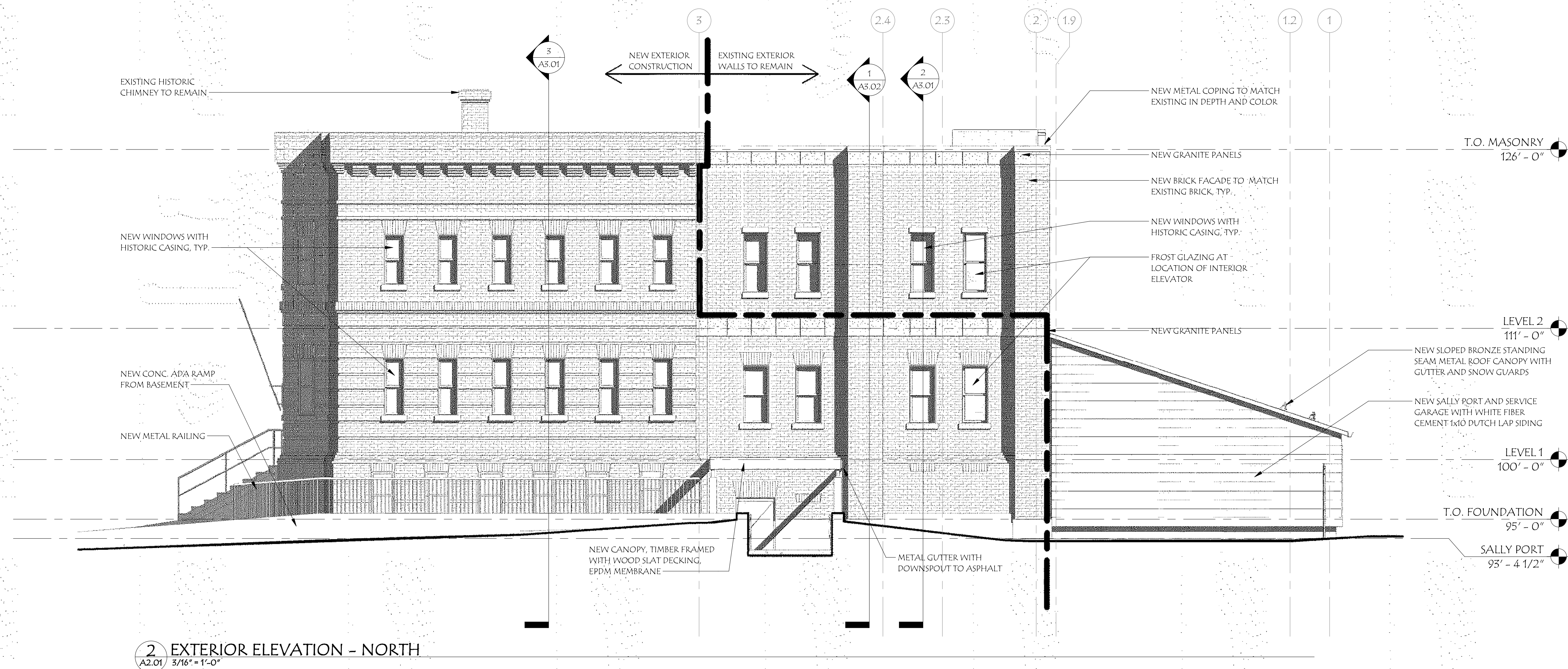
NO.	DATE:	REVISION:

DATE:	05/13/2022
SCALE:	1/4" = 1'-0"
PROJECT NO:	2021050
DRAWN BY:	JUH
CHECKED BY:	DPR

ROOF PLAN

SHEET NUMBER:  
A1.05



[illegible]